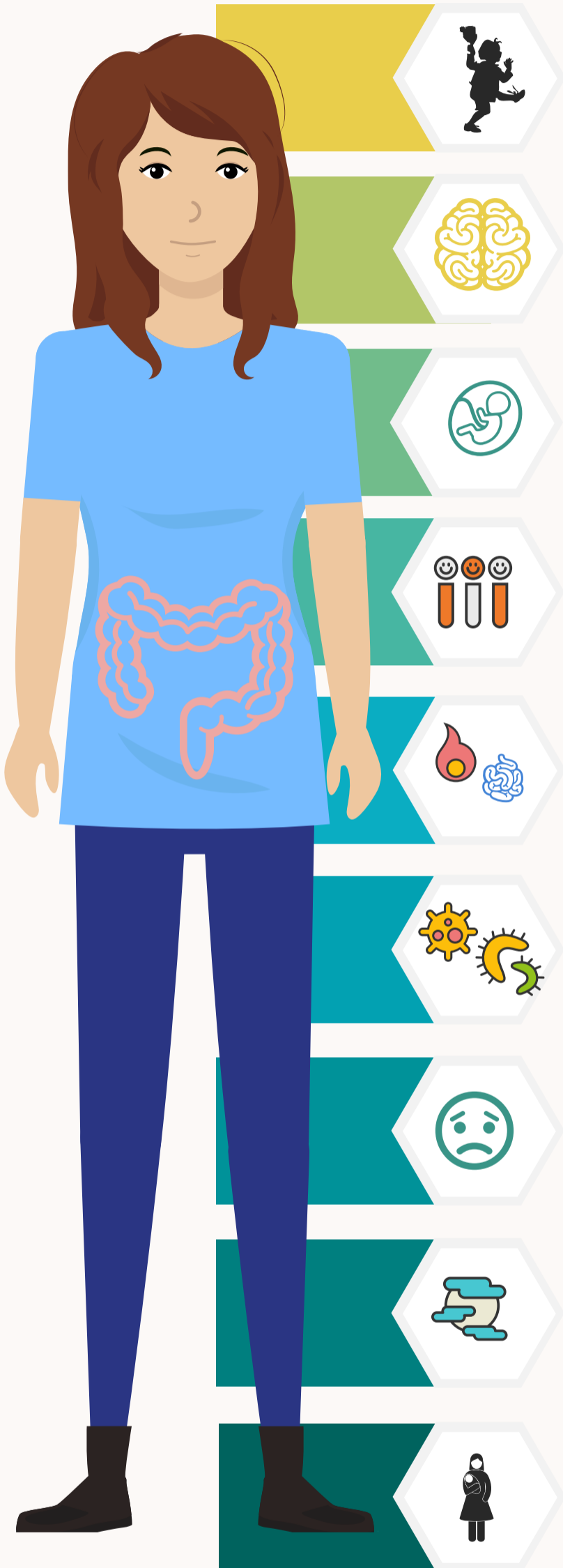


Psychopathology

Eco, bio, developmental, relational,

microbial, Immunological, trauma, cultural, & systemic perspective



1. Developmental

2. Neurological

3. Biological (genetic and epigenetic)

4. Psychological

5. Immunological (inflammation)

6. Microbial (Gut Microbiota)

7. Systemic

8. Cultural

9. Relational (social engagement)

10. Toxic stress/traumatic stress

11. Lifestyle (drinking, diet, smoking, or sleep, etc.)

Please gather information on the client from a holistic perspective to understand psychopathology. You are a micro-ecosystem living in the embedded ecosystem in relations to others.

Created by Yoon Suh Moh, Ph.D., NCC, CRC, LPC